

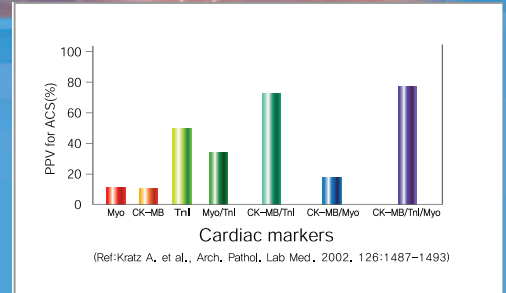


Cardiac Rapid Tests

To Aid in the Detection of Acute Myocardial Infarction

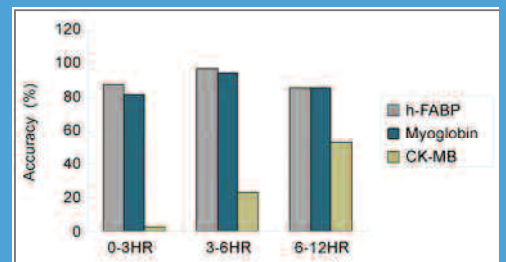


The **Cardiac Triple Test** is a one-step, in vitro diagnostic test designed for qualitative determination of cardiac Troponin I (cTnI), Creatine Kinase isoenzyme-MB (CK-MB) and Myoglobin in human serum, whole blood or plasma.



Individual cardiac markers have a low positive predictive value (PPV) for acute coronary syndrome (ACS) but increase if all 3 markers (Myoglobin, CK-MB and Troponin I) are used.

The **One-Step Rapid h-FABP Diagnostic Test** is a highly specific aid in the early detection (≤ 3 Hours) of AMI.



Reliability comparison among h-FABP, Myoglobin, and CK-MB. h-FABP provides increased sensitivity and specificity.

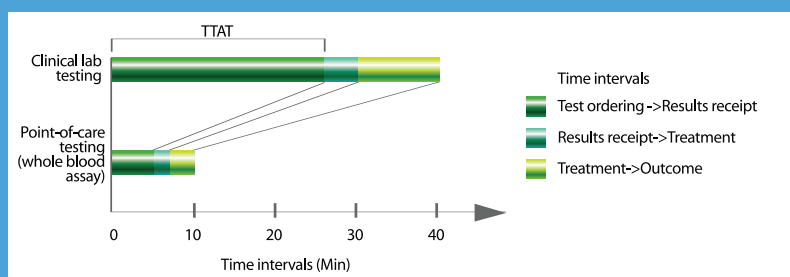
Features

Easy to Use Simply add two drops of whole blood

Advantages Earlier diagnosis
Higher specificity, sensitivity and accuracy (94% - 97.8%)

Convenient Use and store at room temperature
Shelf life: 12 months = h-FABP Test; 18 months = Cardiac Triple Test

Rapid Results in minutes.



Reduction in results turnaround time when using point-of-care testing for cardiac injury markers versus clinical lab testing
TTAT = Therapeutic Turnaround Time

Other Rapid Tests Available

Infectious Diseases

- HbsAb
- HbsAg
- HCV
- HIV 1 / 2
- Helicobacter pylori
- Chlamydia
- Syphilis
- Strep A
- Tuberculosis
- Typhoid Pf/Py (Combo)
- Malaria IgG/IgM (Combo)

Sample: Whole Blood, serum, plasma
faeces, genital/oral surface swabs

Hormones And Regulatory Proteins

- HCG
- HLH

Sample: Whole blood, serum, plasma,
faeces and midstream urine

Drugs of Abuse

- Amphetamines
- Barbiturates
- Buprenorphine
- Benzodiazepines
- Cocaine
- Cotinine
- EDDP
- MDMA
- MDA
- Methamphetamine
- Morphine / Opiates
- Methadone
- Phencyclidine
- THC
- Tricyclic – antidepressants

Sample: Urine

Distributor

For more information contact:



Business & Technology Park,
Carrigtwohill,
Co.Cork,
Ireland.

Tel +353 21 4533652

Fax +353 21 4533653

Website: www.auditdiagnostics.com

Email: info@auditdiagnostics.ie